



# Family Medicine Internship Program: Evaluation from interns

Samuel YS Wong  
School of Public Health and Primary  
Care



# Intern FM training: overseas

Since 1980s



Since 1991



Since 2000



Since 2004

Since 2003



# Intern FM training: overseas

- Continuous placement
- Duration varies from 8-26 weeks



# Overseas Experience

- Enable doctors to care for patients in a **different setting** from secondary care
- **Bridge** between medical school & GP training
- Encourage junior doctors to **take up GP career**
- **Enhance understanding** of integration between primary & secondary care
- **Assess suitability** for that specialty
- Allows doctor to be **certain of career choice**



# Why does HK need intern FM training?

- Medical council:
  - “need to enhance family medicine training”
  - “both medical schools [should] increase FM exposure”
  - “more should be done to attract [doctors] into specialty”
- No opportunity for HK graduate to experience FM before decision on career
- In line with HK’s healthcare reform
- Family medicine most cost effective for primary care delivery



# HK Pilot Program

- Interns working in PWH medical department
- 40 interns spread over one year/10 interns per rotation
- 4 afternoon sessions per intern
- Content:
  - Interns conducted consultations under supervision first followed by indirect supervision
  - Patients' management plans discussed with the FM specialists before end of consultation
  - One on one discussions also took place



# HK Pilot Program

- Objectives:
  - Promote independent primary care practice
  - Apply FM approach to patient care
  - Reinforce importance of patient centered communication
  - Enable appreciation of primary care's role
- Evaluation: post-program evaluation

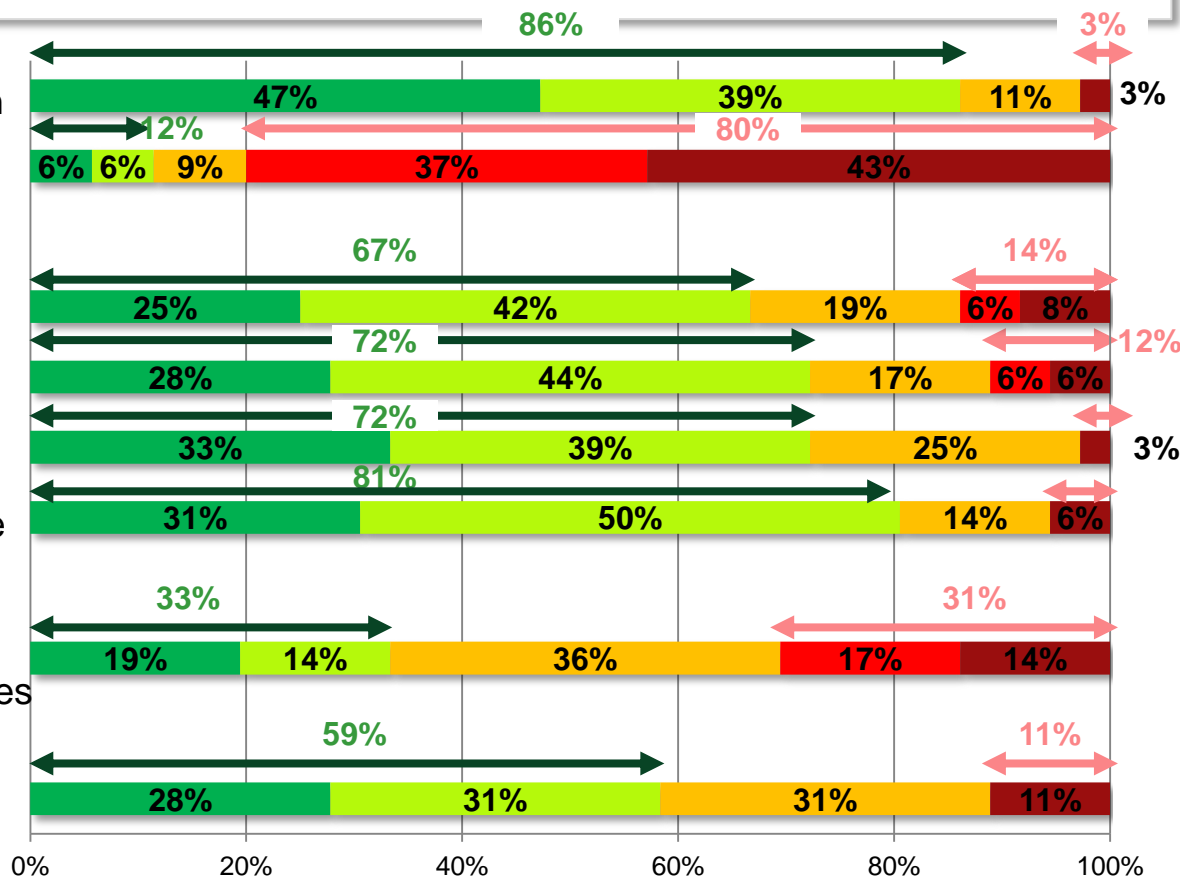


# Program Evaluation

Strongly agree & Agree

Strongly disagree & Disagree

Strongly agree Agree Neutral Disagree Strongly disagree



## Supervision

I was provided with adequate supervision

I felt unsupported when help was needed

## Internship Experience

I was allowed to practise independently

I had opportunities to improve patient communication

The attachment provided insight into primary care

I had opportunities to practise primary care

## Career Progression

Family medicine is one of my career choices

## Internship Recommendation

I will recommend FM training to others





# Conclusion from Pilot Program

- Positive Feedback from interns
- Only provided limited exposure
- Potential for developing into a formal program similar to other countries?



# Acknowledgements

- Dr. Kenny Kung
- Dr. Augustine Lam
- Prof. Sian Griffiths
- Members of Family Medicine Training Subcommittee, Hospital Authority
- Prof. Simon Plint