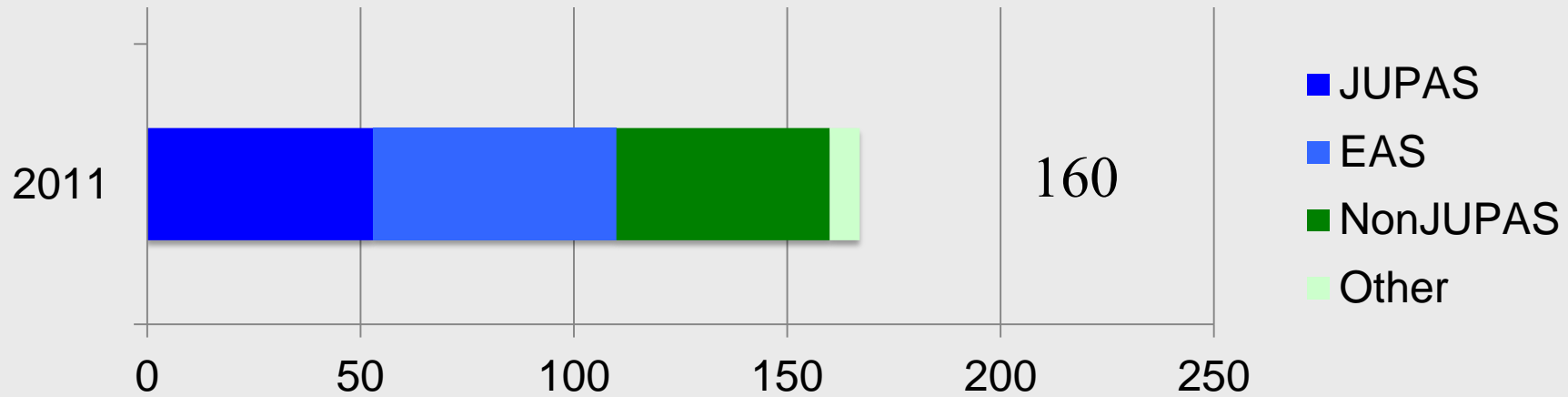


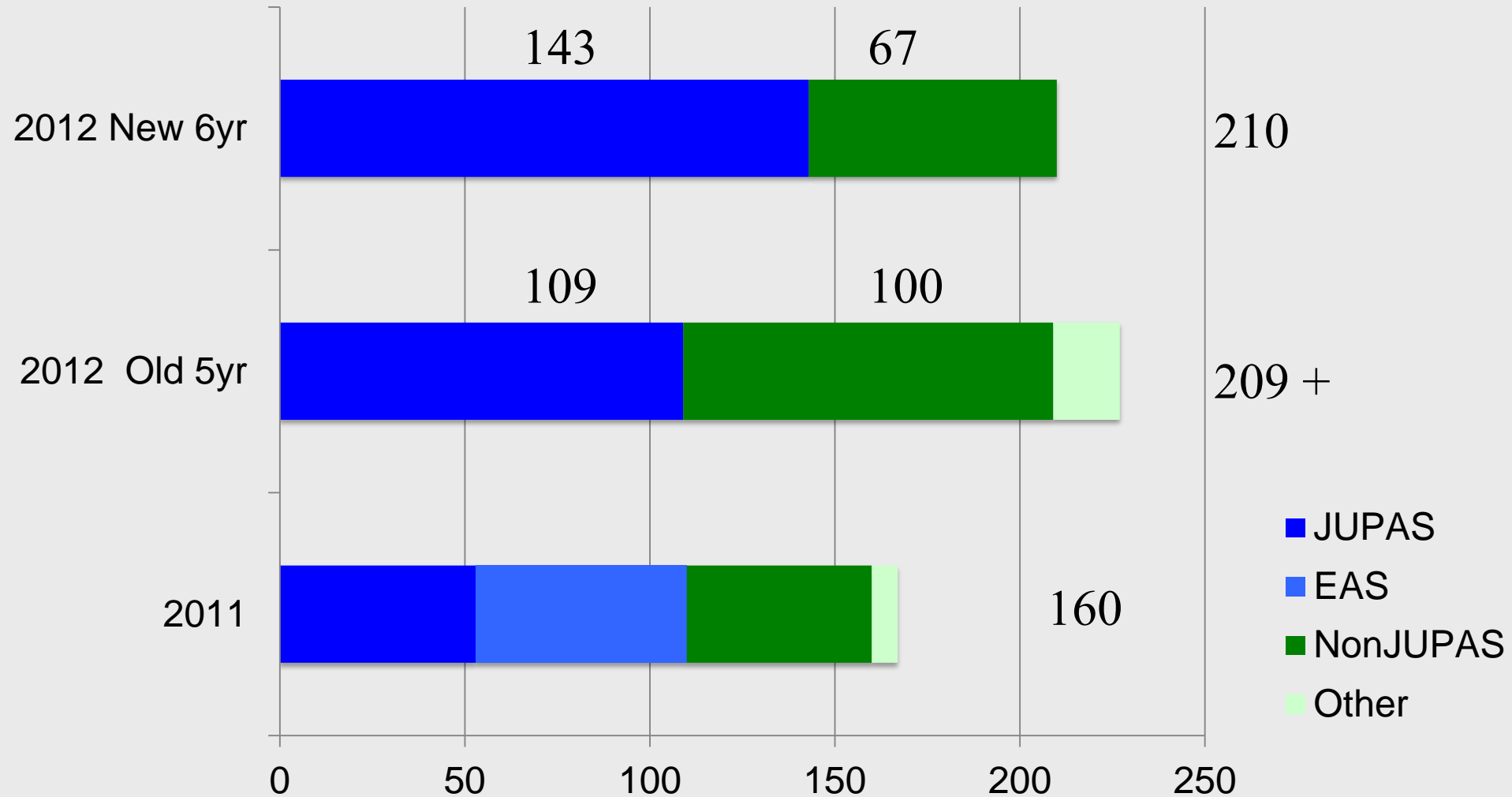
Admissions 2012

- HKALE 266
- HKDSE 459
- nonJUPAS 321
- Misc ~29
- Thank you 1075

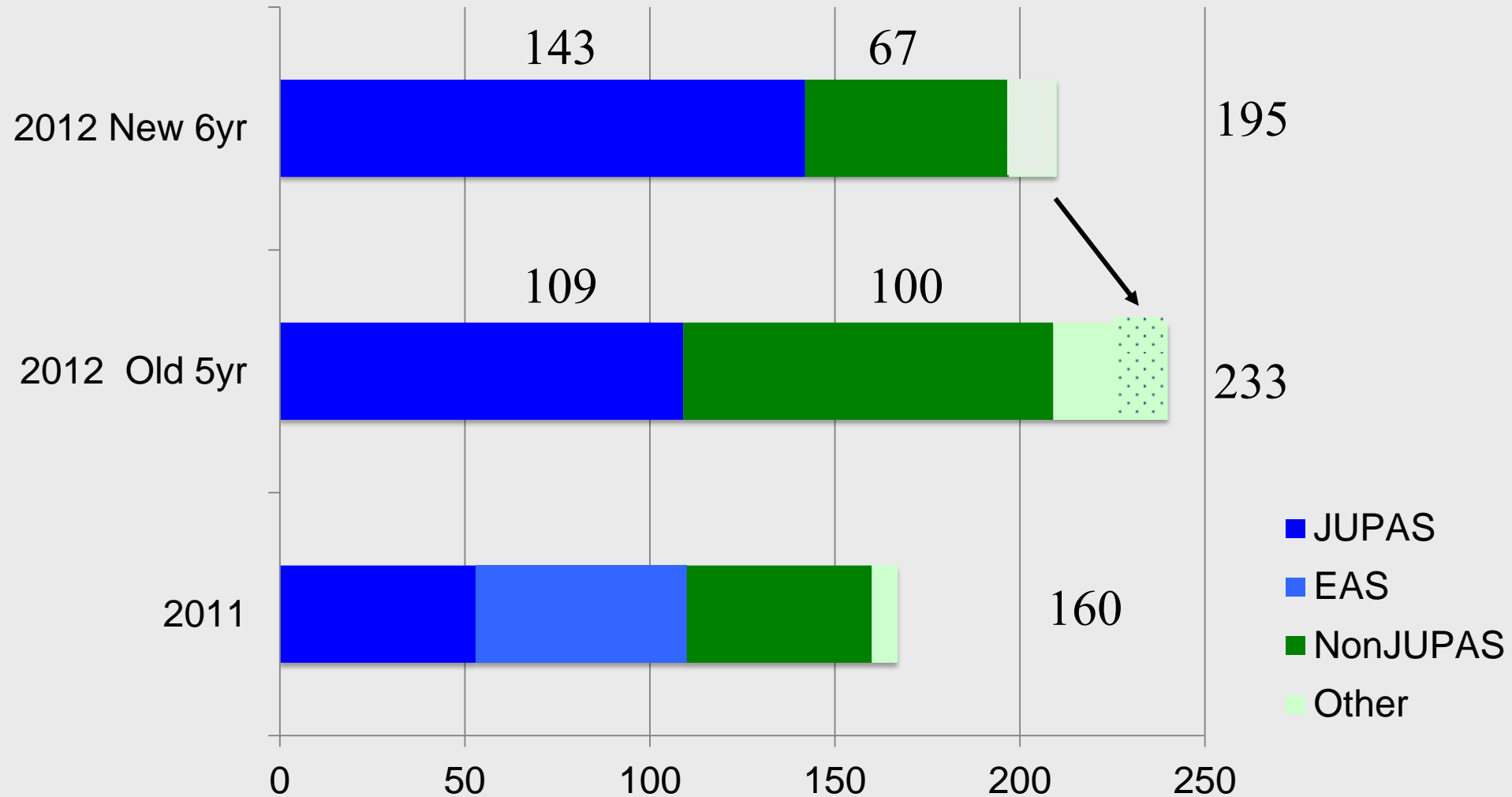
Class intake



Class intake



Class intake



Admissions 2012 (New 6 year)

- HKDSE ~72,000
 - English
 - Chinese
 - Mathematics
 - Liberal Studies
 - Elective (min University)
 - Elective (min Medicine)
-
- Requirements for Medicine
 - One of Chemistry/Biology/Physics/Combined Science

HKDSE

~70000 take 5 subjects

- 19,000 take 3 electives (7 subjects)
- 17,000 take Biology, Chemistry
- 5** top 1%
- 5* 1-4%
- 5 4-10%
- 5x5** 83 (0.1%)
- 5x5*+ 707 (1%)

HKDSE ranking

- Different formula among Universities and Departments
- Most emphasize the Core subjects
- CUHK: Core + 1 and then bonus for 2 &3
- HKU: Core + 2
- CUHK Med : Core + 3

[illegible]

EAS statistics

A s	10	9	8	7	6	10	9	8	7	6
2009	3	15	25	0	0	0	1	6	15	21
2009	6	19	22	0	0	0	0	4	27	24
2010	6	25	23	0	0	0	1	18	21	17
2011	8	25	20	4	0	0	0	21	26	10

HKU

- Scholarships
 - – immediately announce on website
- 7 x 5** 5 100%
- 6+ x 5** 32 82%
- 5+ x 5** 83 75%

NonJUPAS

- Old 5 Year (~100)

- Graduates 31
- Graduates from new 12
- Undergrads 15
- UG internal transfer 10

- IB 16
- GCE A level 18
- Misc S6 3

- New 5 Year (~67)

- Graduates to old 12

- IB 7
- GCE A level 15
- S6 GCE 15
- S6 IB 7
- S6 other 6
- Mainland 3

nonJUPAS

- GCE A level
 - $A \geq 80\%$
 - $A^* \geq 90\%$ in final A2
 - but $\sim 10\%$ score A^*
 - similar to HKDSE 5
 - Normal cutoff 95%
- IB 45 0.2%
- 44+ 0.6%
- 43+ 1.3%
- 42+ 2.4%
- Normal cutoff $\sim 42/45$ or $40/42$

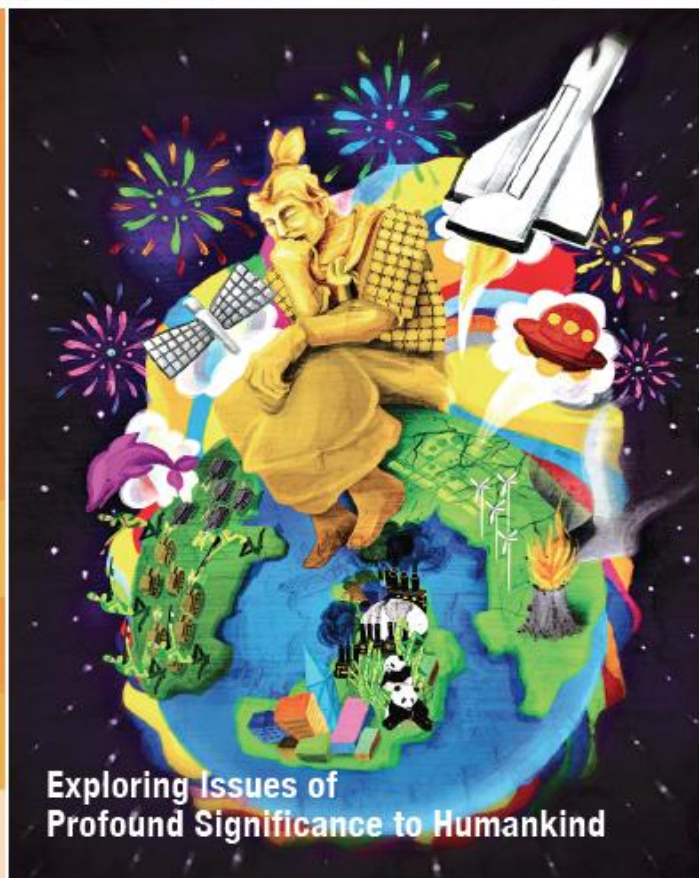
UCAS	HKDSE	GCE A	IB HL
140		A^*	
130	5^*		7
120	5	A	
110			6

nonJUPAS

- ~10 withdrew the week before start
- ~10 withdrew over the weekend
- ~10 withdrew after classes started

- mainly GCE and IB
- mostly to HKU

COMMONCORE



Exploring Issues of Profound Significance to Humankind



The Common Core Curriculum is a new requirement for undergraduate students at HKU, one of the world's leading universities. It is designed to broaden your horizons beyond your chosen discipline and give you the opportunity to explore issues of profound significance to humankind in the 21st century.

For more information on HKU's Common Core Curriculum, please visit <http://commoncore.hku.hk>

- HKU is ranked 21st in the Times Higher Education World University Rankings 2010-2011

China's Modernization in the East Asian Context

Is modernization just about economic development and the construction of a state structure? Or should it encompass broader advances in ideology and the embracement of universal values and norms like the protection of Human Rights? This course enables students to understand and appreciate China's quest for modernity since the 19th century, contextualized against the development of her neighbours in East Asia.



Dr Victor Teo, Faculty of Arts

"By inviting students to scrutinize the dynamics and processes involved in China's quest for modernity, we hope they can think about the implications modernization brings at different levels and appreciate the normative issues involved. We hope students will be able to appreciate the multifaceted dimensions of development and acquire a better understanding of contemporary China and East Asian affairs."

A Student's Experience

"We are encouraged to think, analyze, and develop an overall understanding of the issues with a holistic point of view."



"The one real goal of education is to leave a person asking questions." - Max Beerbohm



Love, Marriage and Sex in Modern China

This course begins from issues that are personally relevant to young people – male choice, love, marriage, sex and family – with a view to helping students think about the historical and cultural roots of values concerning love, sexuality, marriage, and family life in China. Case studies and documentary films will be used to enable students to understand the diverse characteristics of "Chinese" ways of life.

Dr. Petula Ho, Faculty of Social Sciences

"Students are encouraged to reach out, talk to people, learn from their experiences and make films on cross-border intimacies. We have a screening event which is a dialogue between the teacher, the students and the community about what they have found through their observations, interviews and analyses. The students come to be knowledge producers rather than passive learners."

A Student's Experience

"It is hands down the best course I've taken. It's very well analyzed and organized. It really puts warmth into my heart how the teacher tries to engage us."



YR

1

Year 1: 28 teaching weeks in total

Introduction to Health Sciences Health and the Local/ Global Community Medical Ethics and Humanities: the foundations		Mid-term Formative Exam	Mechanisms of Diseases Health and the Local/ Global Community Medical Ethics and Humanities: the foundations		Term Break for Revision	Summative Exam	CCC (if courses are available in the summer semester)	
Four Common Core Courses (24 credits)								
General English Course (6 credits)								
Sep					Mid Apr	May	Jun	Aug

2

Year 2: 28 teaching weeks in total

RESP System	CVS System	GI System	Term Break for Semester 1	URO System	MSS System	Term Break for Revision	Summative Exam	CCC (if courses are available in the summer semester)
One or Two Common Core Courses (6-12 credits)								
Sep		Early Dec	Early Jan		April	Late May	Jun	Aug

3

Year 3: 28 teaching weeks in total

CNS System	H&N System	HI System	Term Break for Semester 1	ENDO System	Term Break for Revision	Summative Exam	Elective (16 weeks)	
Professional Use of Chinese (6 credits)								
Sep		Early Dec	Early Jan	Early Feb		Early Mar		End Jun

4

Year 4: 30 teaching weeks in total

Integrated Block (8 wks)	Formative Exam	Junior Clerkship Medicine Block (8 wks)	Junior Clerkship Surgery Block (8 wks)	Junior Clerkship Multidisciplinary Block (8 wks)	Term Break for Revision	Summative Exam	
English in the Discipline (6 credits)							
Aug	Mid Oct	Jan		Mid Apr	May		

5

Year 5: 48 teaching weeks in total

Senior Clerkship Medicine Block (8 wks)	Senior Clerkship Surgery Block (8 wks)	Senior Clerkship Multidisciplinary Block (8 wks)	Specialty Clerkship Medicine Block (8 wks)	Specialty Clerkship Obstetrics & Gynaecology Block (8wks)	Specialty Clerkship Orthopaedics & Traumatology/ Emergency Medicine Block (8 wks)
Jul			Jan		Jun

6

Year 6: 26 teaching weeks in total

Specialty Clerkship Paediatrics & Adolescent Medicine Block (8 wks)	Specialty Clerkship Psychiatry/ Family Medicine Block (8 wks)	Specialty Clerkship Surgery Block (8 wks)	Revision Sessions	Final Exam	Elective (4 wks)	Pre-internship Block
Jul			Jan	Mar	Mid Apr	Jun

Advanced program

- HKDSE to Year 2 (permit BMedSci, exchange, or finish in 5 y)
- Advanced Standing for nonJUPAS (~S7 and above)
 - exemptions and direct to Year 2
 - complicated CUHK exemption system
 - very difficult to obtain some exemptions, many combinations
- Difficult for many to finish in 5 years (except graduates)
- Faculty is not credit unit based
 - Need flexibility to permit students to take University requirements
 - May need to create unit based courses
- Need to exempt Faculty package
 - Implications for teaching and transfer of material to Year 1

Continue Early Direct Entry ?

- Previous EAS admit S6 on HKCEE
- Similar Direct scheme for GCSE (with 9A*+)
- As new curriculum for S6, should we admit other S6
- HKDSE is S6, but equivalent to GCE A, IB
- IB finished in S6 at some schools (CanIS, AIS, DBS)
- HKDSE S4 transfer direct to S6 in UK and sit GCE AS
- HKDSE sit GCSE in S5, full GCE A in S6
- Prefer to take students with full qualification IB/GCE/HKDSE rather than S6 with only GCSE

Admissions: Other issues

- Admission criteria for HKDSE
 - Chemistry compulsory 2014, Biology preferred
- Refine ranking system for HKDSE (many ties)
- Mechanism to admit Mainland students
- Declarations on admission (fitness practice)
- Statistics on performance of students
- Review selection - admissions tests, interviews