

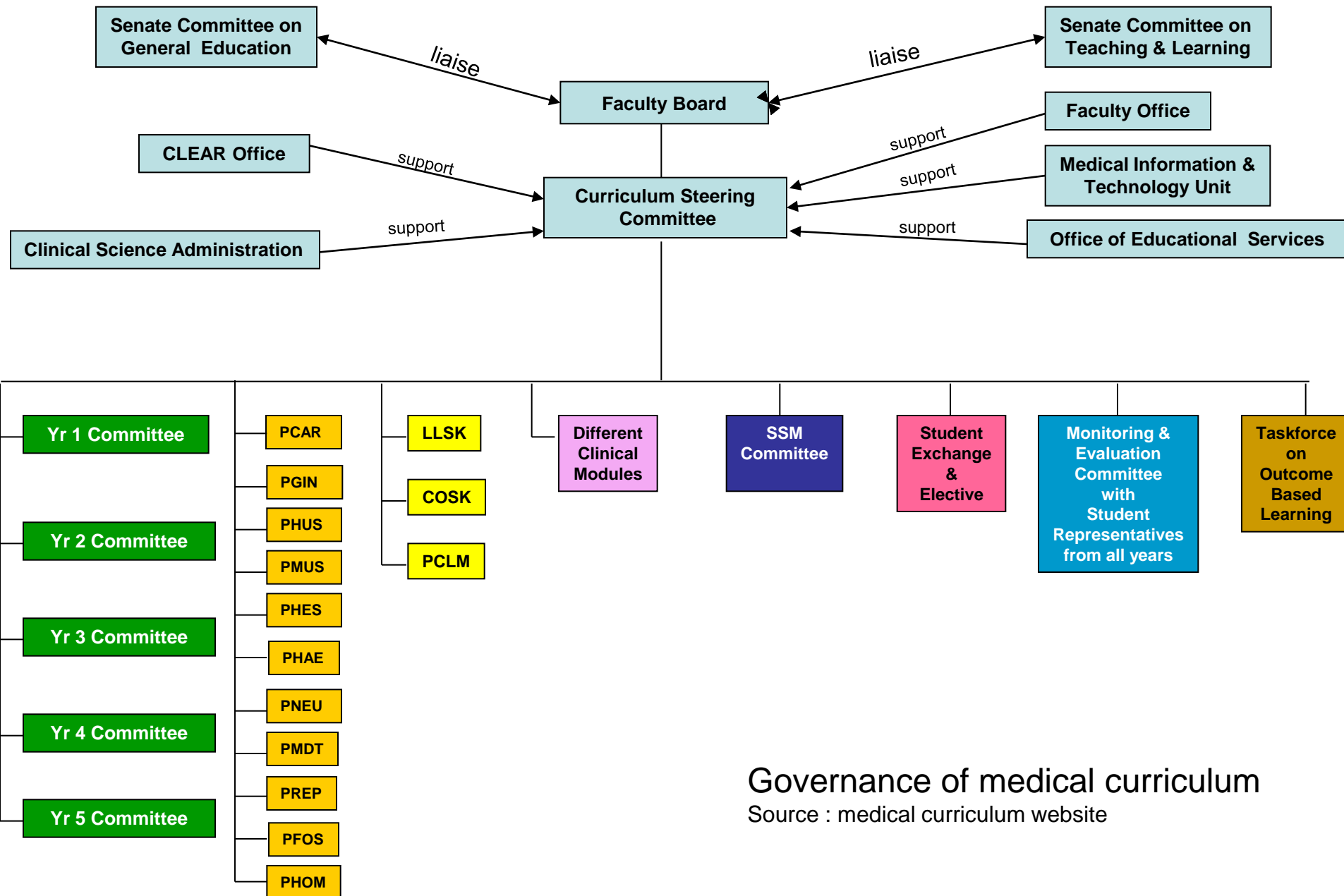
“Identifying redundancies in the curriculum using concordance software.”

Andrew Burd

Surgery

Faculty of Medicine, The Chinese University of Hong Kong

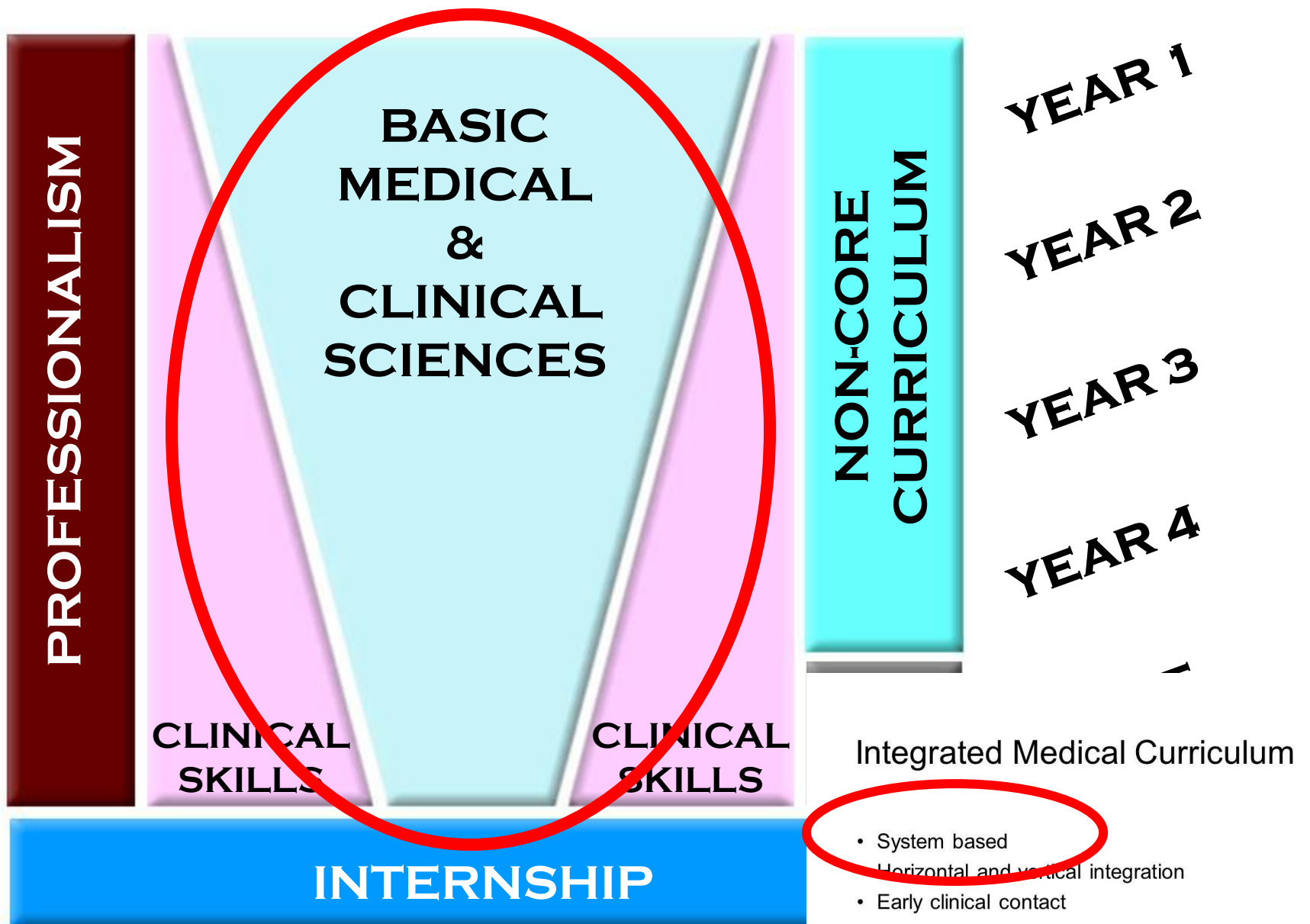
Administration & Development of Medical Curriculum



Governance of medical curriculum
Source : medical curriculum website

Integrated Medical Curriculum

- **System based**
- **Horizontal and vertical integration**
- **Early clinical contact**
- **Emphasis on skills : clinical skills, communication skills and life skills**
- **Improvements on assessments**

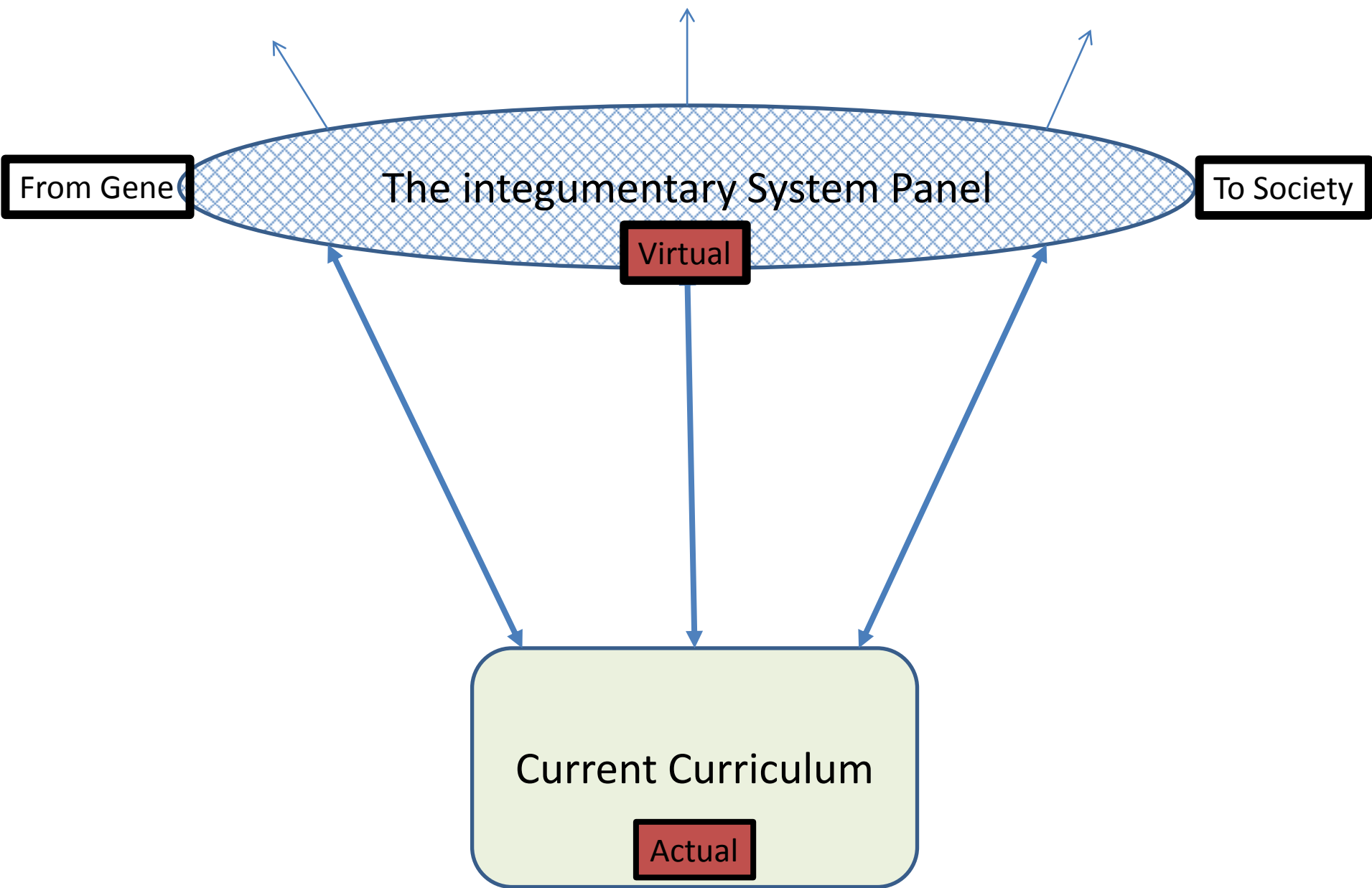


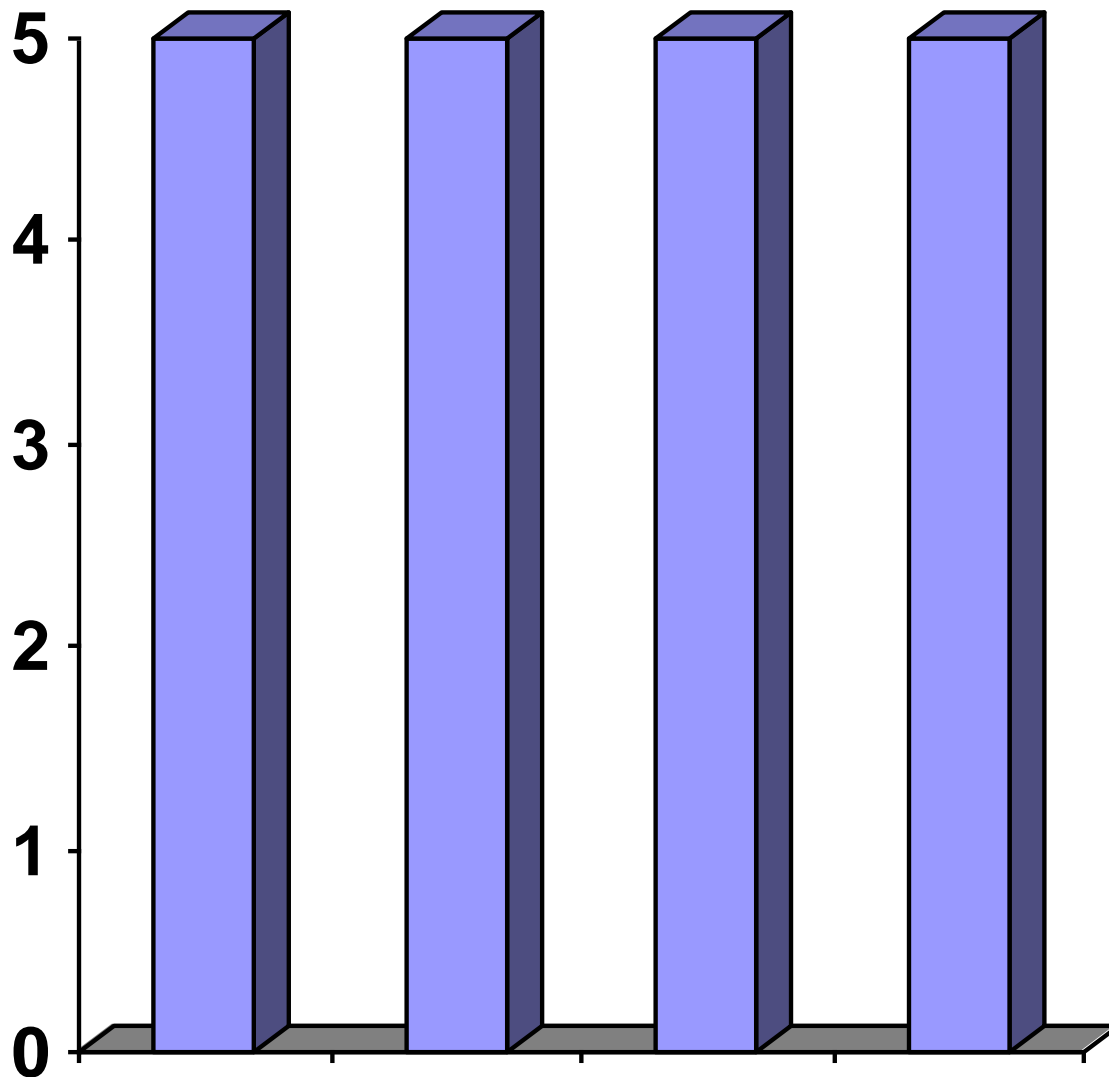
Vertical integration of MB ChB curriculum

Ideas & Innovations:

09:20	09:30	Blended Learning	Prof Gavin Joynt
09:30	09:40	The Integumentary System Module and how to Situate it in the Curriculum	Prof Andrew Burd
09:40	09:50	The Use of Clickers in Nursing Lectures	Dr Isabel Hwang
09:50	09:55	MESF Project: Virtual Microscopy for Teaching Histology	Prof Anthony Lo
09:55	10:00	Evaluation of Web-enriched Resources in Enhancing Baccalaureate-nursing Students' Learning of Clinical Nursing Skills	Prof Wan-yim Ip







**Horizontal Integration
(Lacking)?**

Integrated Medical Curriculum

- ~~Systemic issues~~
- Horizontal and vertical integration
- Early clinical exposure
- Emphasis on skills : clinical skills, communication skills and life skills
- Improvements on assessments

 **Vertical
Integration (Good)**



Application for Supplementary Funds to Improve Teaching and Learning in the MB ChB Curriculum 2012

Project Title: Horizontal Integration of the Medical Curriculum in the Chinese University of Hong Kong using Concordance Based Indexing for Cross Referencing and Curriculum Mapping.

Lead Teacher:

Andrew BURD, Professor and Chief of Plastic, Reconstructive and Aesthetic Surgery, Department of Surgery, The Chinese University of Hong Kong

Supporting Teachers:

<u>Name</u>	<u>Coordinator / Co-coordinator</u>
Professor Simon AU	Year 1 + PHOM
Professor Sun On CHAN	Year 2
Professor Raphael CHAN	Year 3
Professor Tony NELSON	Year 4
Professor Paul LAI	Year 5 + PCLM
Professor Gary WONG	COSK + Communication Skills
Professor Gavin JOYNT	LLSK + PFOS
Professor Anna LEE	LLSK
Professor Juliana CHAN	PCLM
Professor Alice KONG	PCLM
Professor Wing Tai CHEUNG	PFOS
Professor Francis CHAN	PGIN+SSM
Professor Po Sing LEUNG	PGIN
Professor Mamie HUI	PHAE
Professor Kai Ming CHAN	PHES
Professor Samuel WONG	PHES + Public Health & Healthcare Ethics
Professor Franky CHAN	PHUS
Professor Ann KING	PHUS
Professor Ben KO	PMDT
Professor Alaster LAU	PMDT
Professor Wing Hang KWONG	PMUS
Professor Tsz Ping LAM	PMUS
Professor Eric CHO	PNEU
Professor Yun Kwok WING	PNEU
Professor Ting Fan LEUNG	PREP
Professor Rita SUNG	Director of Clinical Skills Centre

Language Consultant

Mr Nigel BRUCE

Horizontal Integration of the Medical Curriculum in the Chinese University of Hong Kong using Concordance Based Indexing for Cross Referencing and Curriculum Mapping.

CDG 2012 - 2013

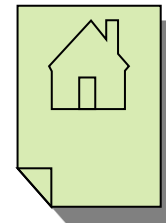
The brief project outline:

- (1) Q1 and Q2 : create concordance using propriety software programme
- (2) Q3 : in conjunction with year co-ordinators Y1 – Y5 and other panel coordinators identify parts of the current curriculum which are included in the concordance index.
- (3) Q4 : identify key topics and teachers and prepare sample videos for inclusion into a Faculty wide teaching resource.

English

- A language based on the highest level of abstract symbolism.
- Alphabet of 26 characters (5 vowels, 21 consonants) giving rise to over one million words

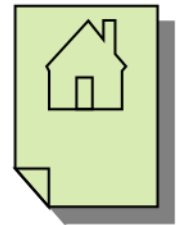
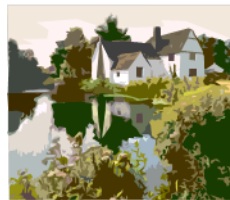
• HOUSE =



Chinese

- A language based on lower order pictorial symbolism of entire concepts.
- Around 3-400,000 words; 47,000+ characters of which around 43,000+ are redundant

- 房(house)=户+方

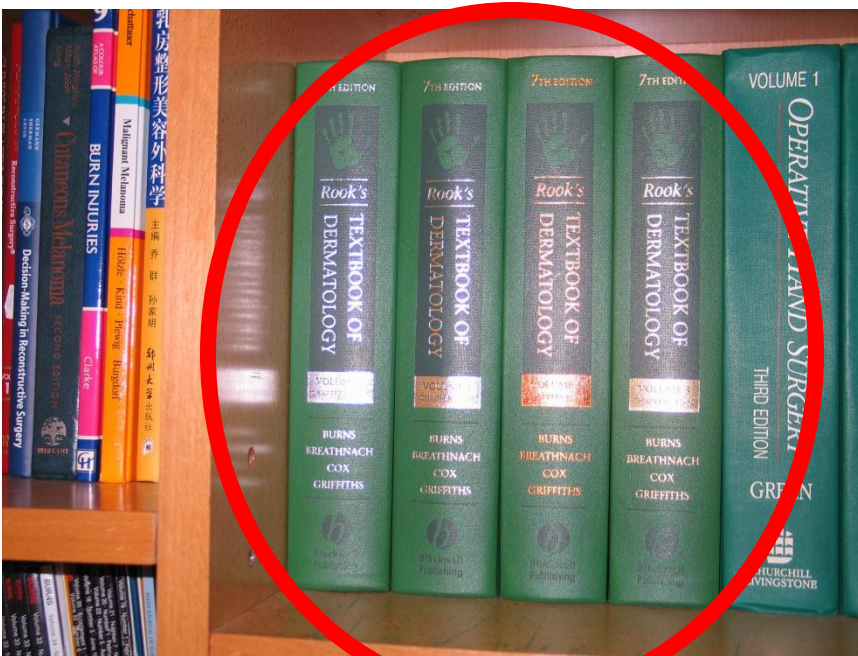


English

- Characters
 - A, b, c,
- Words
 - Bat, ball, student.
- Sentences
 - The cat sat on the mat.
- Grammar
 - The mat, sat, on the cat.
- Punctuation
 - The cat, sat.

Corpus

- A collection of written works in a particular field



Rooks Textbook of Dermatology

Published by Wiley Blackwell

Over 8 million words.

Laurence Anthony

Professor (Mathematical
Physics)

Center for English Language
Education in Science and
Engineering (CELESE)

Faculty of Science and
Engineering

Waseda University, Tokyo,
Japan



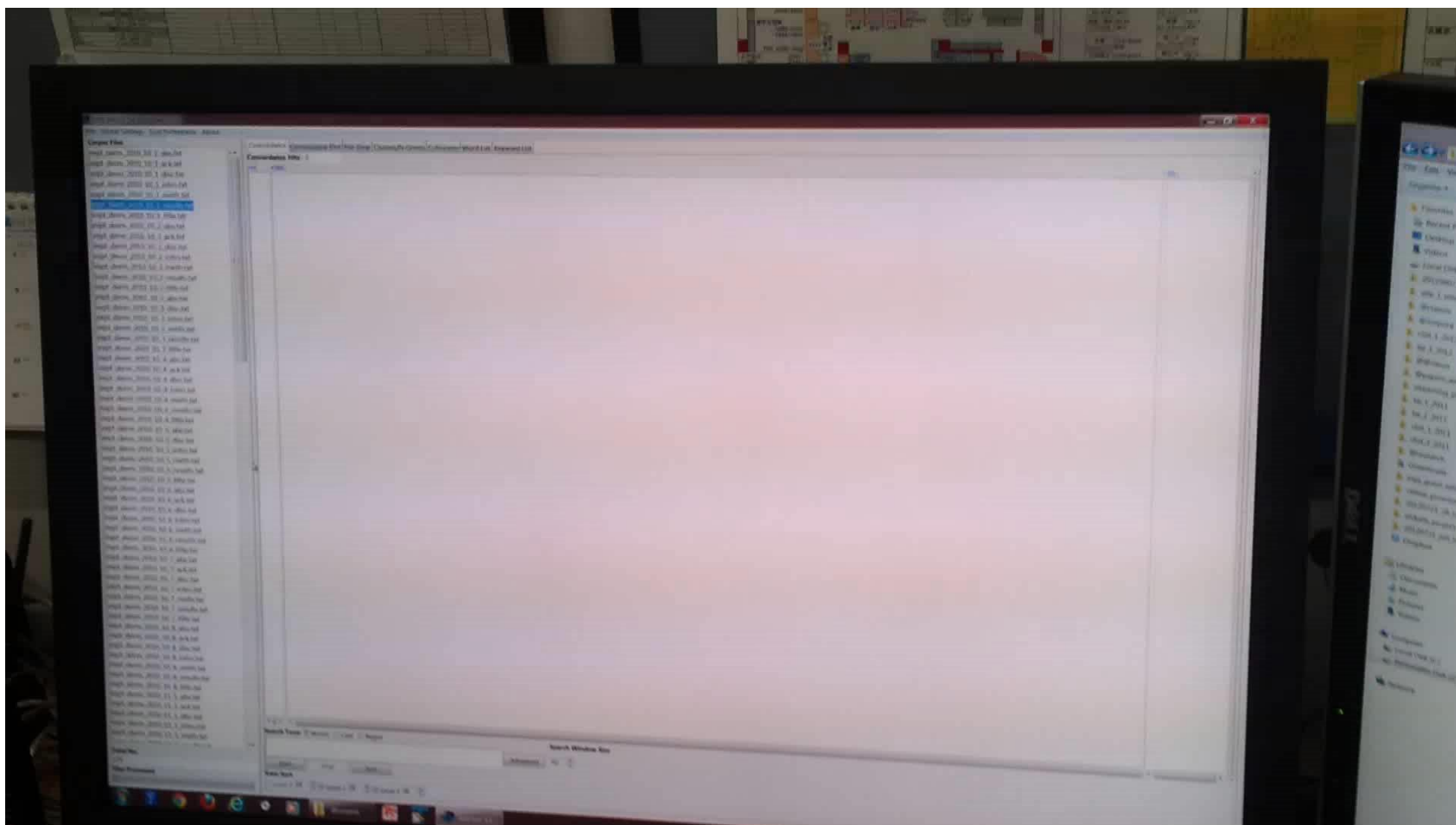
One of the world's leading experts in corpus linguistics

Progress

Laurence and I have signed a legally binding contract with Wiley Blackwell to access the electronic data files of the Rook's Textbook of Dermatology

First such project by WB — a win-win

Searching a corpus



Next Step(s)?

1. Mine the corpus
2. Develop a list of key terms
3. Search as much of the curriculum as possible using those terms

CONCORDANCE ANALYSIS

The “Search”

- **PPT presentations** -- there is software to extract text from presentations
- **Handouts** – electronic formats better but can scan and use text recognition software
- **Voice over** – can use voice recognition software

Thanks

Supporting Teachers:

<u>Name</u>	<u>Coordinator / Co-coordinator</u>
Professor Simon AU	Year 1 + PHOM
Professor Sun On CHAN	Year 2
Professor Raphael CHAN	Year 3
Professor Tony NELSON	Year 4
Professor Paul LAI	Year 5 + PCLM
Professor Gary WONG	COSK + Communication Skills
Professor Gavin JOYNT	LLSK + PFOS
Professor Anna LEE	LLSK
Professor Juliana CHAN	PCLM
Professor Alice KONG	PCLM
Professor Wing Tai CHEUNG	PFOS
Professor Francis CHAN	PGIN+SSM
Professor Po Sing LEUNG	PGIN
Professor Mamie HUI	PHAE
Professor Kai Ming CHAN	PHEs
Professor Samuel WONG	PHEs + Public Health & Healthcare Ethics
Professor Franky CHAN	PHUS
Professor Ann KING	PHUS
Professor Ben KO	PMDT
Professor Alaster LAU	PMDT
Professor Wing Hang KWONG	PMUS
Professor Tsz Ping LAM	PMUS
Professor Eric CHO	PNEU
Professor Yun Kwok WING	PNEU
Professor Ting Fan LEUNG	PREP
Professor Rita SUNG	Director of Clinical Skills Centre

Language Consultant

Mr Nigel BRUCE

Professor HK Ng
and
Professor Shekhar
Kumta

A train



Please jump on