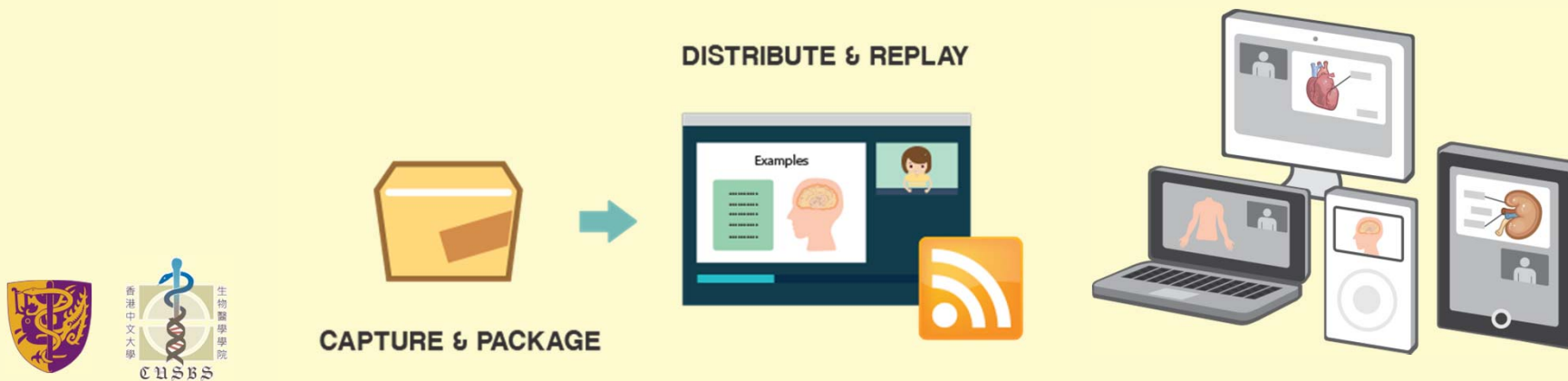


Lecture Capture System in Physiology Courses

Echo
360

Isabel Hwang

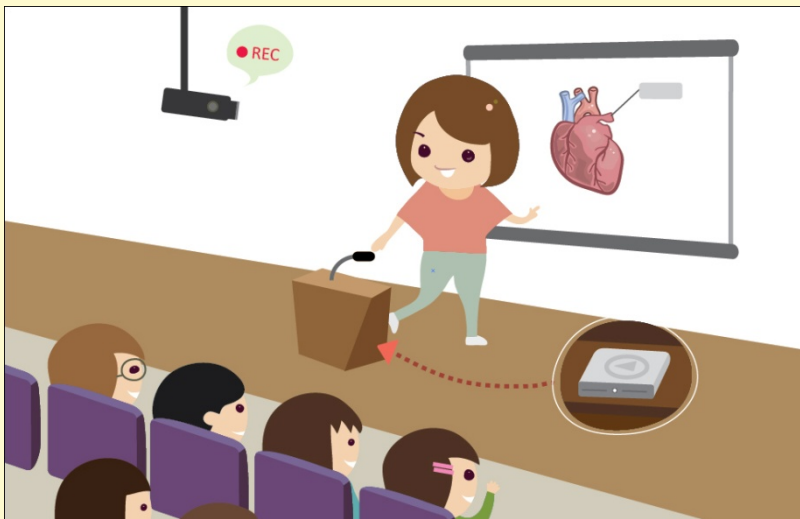
*Teaching and Learning Unit
School of Biomedical Sciences
Faculty of Medicine*



Features

- Capture live lecture “or” pre-record in controlled environment
- Visual and audio recordings viewed via desktop computer, laptop, ipad, android tablets, smart phones etc
- Viewer can replay, skip, rewind or fastforward

Live recording at lecture theatre



Recording in professional-grade studio



Table 1. Course information and percentage of recorded lectures in 4 Physiology courses.

Course Name/ Course Code	Student Number	Number of Recorded Lecture Hours	Total Number of Lecture Hours	Percentage (%) of recorded lecture
Bachelor of Pharmacy & Bachelor of Biomedical Engineering (PHAR1431)	88	11	26	42
Bachelor of Nursing Science (NURS1601)	202	12	20	60
Bachelor of Chinese Medicine (BCME1600)	32	12	20	60
Bachelor of Science (Human Biology and Food Science Group) (MEDN3070)	82	8	32	25

2

Average Access rate

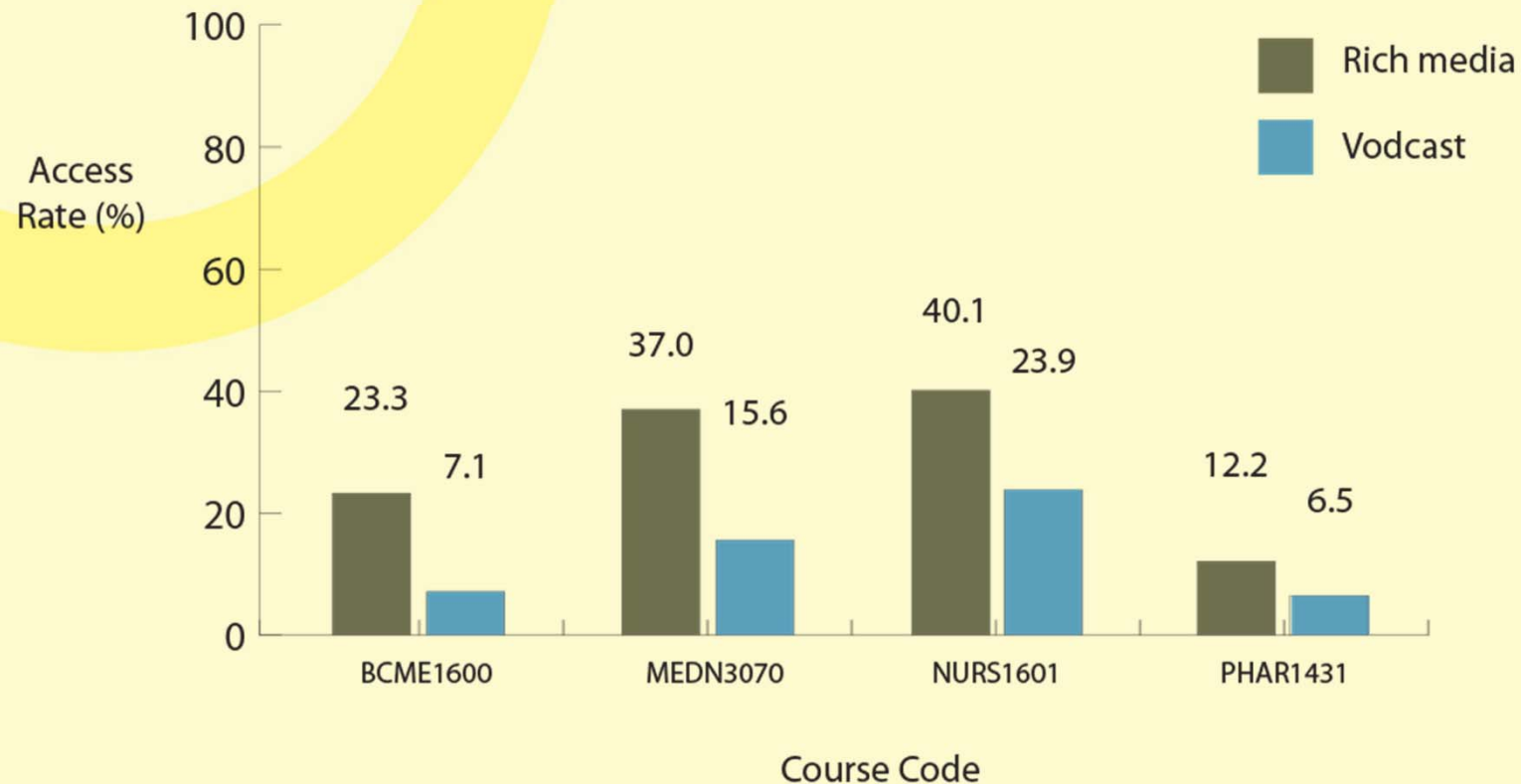


Figure 1. Average access rates from students of the 4 Physiology courses

* All access log records were collected on 26 March 2012

4

Benefits to Students

- Support learning in many ways:
 - Self revision
 - Re-visit complex concepts and ideas
 - Pick up things missed in class
 - Take comprehensive notes after lecture
- Flexibility and convenience

Acknowledgement

- Dr WS Chan from Office of Educational Services, Faculty of Medicine
- This project is supported by a one-line budget of the School of Biomedical Sciences



Thank you.